



RECYCLING

At the end of its service life period
the product should be recycled according
to the recycling procedures in your region.

www.evapolar.com



R-NZ



RoHS



©2020 EVAPOLAR LTD.
Second edition. All rights reserved.

evapolar

Personal Air Cooler

evaLIGHTplus EV-1500

PRODUCT GUIDE

CONTENTS

Safety regulations	3
Basic principles of work	6
To start the device follow the steps	7
Control panel & menu	9
Replacing the cartridge	13
Maintenance: cleaning, storage, transportation	15
Troubleshooting	17
Specifications	19
EEE Waste	20
Legal Information	20

SAFETY REGULATIONS

When using electrical appliances, basic safety precautions should always be followed, including the listed below:

WARNING!

Use this device according to its intended purpose as described in this booklet.

- This device is not intended for use by persons (including children) with reduced physical, sensory or mental capabilities, or lack of experience and knowledge, unless they have been given supervision or instruction concerning use of the device by a person responsible for their safety.
- The device must be placed onto a smooth horizontal surface. Tilting/turning upside down may cause a water leak and damage the device.
- Use only pure water without any additives to fill the device. Usage of other liquids is prohibited. Do not add any aromatic oils or any other odorous substances into the water.
- Disconnect the device before the following actions: cleaning, technical maintenance, removing/replacing elements, and moving the device.
- To fill the water tank with water, always remove it from the device first.

- Do not clean the device with gasoline, window-washing liquid, corrosive substances, or any organic solvent. The warranty does not cover damages caused by improper cleaning.
- In case of a leak or if water spills onto the surface of the device, immediately disconnect the power cord and let the device dry for at least 24 hours.
- We strongly recommend using the original power supply from the package.
- Disconnect all cords by holding the plugs and never pull on the cords themselves.
- To avoid possible damage to the device,
 - do not let any foreign objects enter the device.
 - do not place heavy items on top of the device.
 - do not submerge the device in water or any other liquid (see cleaning guide below).
 - do not subject the device to excessive shocks and vibrations.
 - do not cover the operating device.
 - do not leave the operating device unattended.
- Stop using the device if you notice an unusual sound or smell.

DANGER!

- Do not open the upper cover of the device and/or remove any replaceable parts of the device while it's in operation.

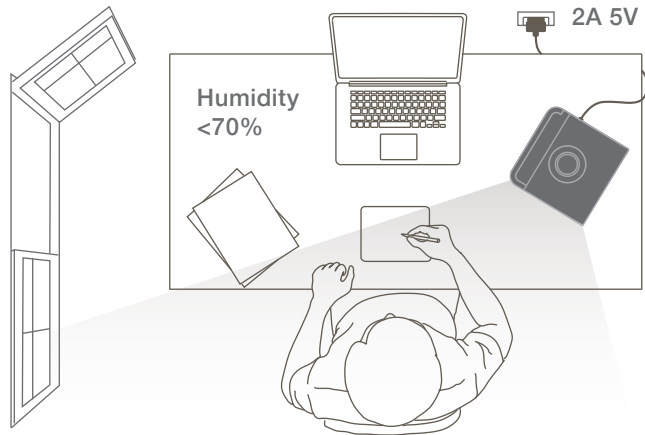
- Do not try to touch the fan or block it with any foreign objects while it's in operation.
- Do not touch the power supply or power cord with wet hands.
- Do not place the device next to a heating electrical equipment and other heat sources, including naked flames.
- Do not place the device upon or next to any other electronic devices (in case of leakage, there is a danger of a short circuit).
- Do not use the device while bathing or in the shower.
- Do not operate the device with a damaged cord or plug, if you noticed it is not working properly, if it has been dropped or damaged.

Failure to heed the warnings above may result in damage to the device or injury. The manufacturer does not take any responsibility for any damage arising from failure to comply with this product guide. If you have not found a solution to your problem, please contact our support team (see page 18), do not try to fix the problem yourself. All repairs must be carried out by qualified service personnel.



In case you notice any malfunction, please check out our troubleshooting guide.

BASIC PRINCIPLES OF WORK



To enjoy a nice cool breeze on a hot day, you need:

1. Well-ventilated room
2. Relative humidity <70%
3. 1000 ml (33.8 oz) of pure water
4. Power supply 2A 5V

TO START THE DEVICE FOLLOW THE STEPS

Ensure the device is placed on the flat horizontal surface first.

FILLING WITH WATER

1. Slide the water reservoir up.
(DO NOT hold the water tank by its removable cover to avoid it detaching and falling down!)
2. Open the lid and fill the reservoir with water.
3. Place the reservoir back onto the base. Make sure it is installed properly. The water will start flowing automatically.

Depending on the air temperature and humidity, the full reservoir should provide from 3 to 8 hours of uninterrupted cooling.

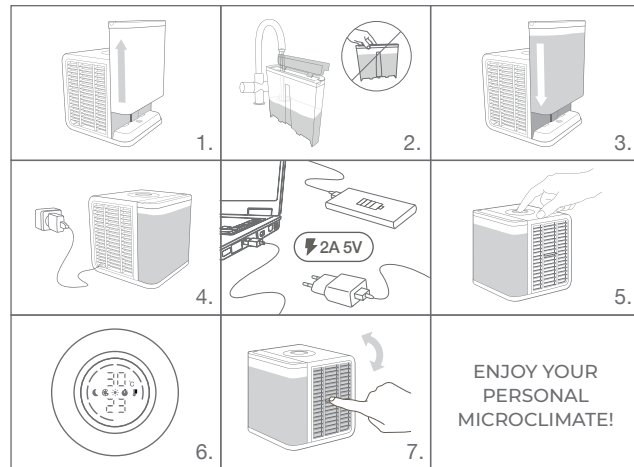
TIP: To extend the time period before the next refill, you need to fill up the reservoir, wait until the cartridge is full of water (max.10 minutes) and then refill the reservoir once again.

OPERATING

4. Use a laptop or PC/power bank/adaptor plugged into the socket as a power source. 2A 5V is a minimum requirement.
5. To turn the device on, press and hold the round screen on the top. Press once again to enter the menu.

6. Use the screen and control wheel to navigate through the menu and adjust the airflow and other features.
7. Move the front grills to adjust the airflow direction.

The temperature of the outgoing air will start to decrease in a few minutes.

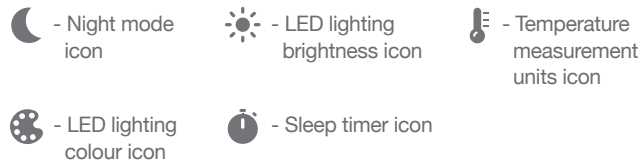
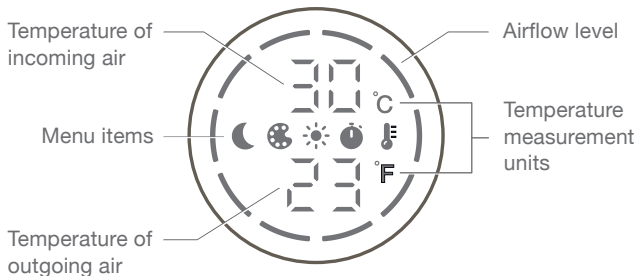


TIP: If you would like to feel a light pleasant aroma in your room, we have come up with an aroma clip especially for you.
Visit evapolar.com/en/shop to make a purchase.

TIP: If for any reason you are unable to connect your device to a direct power source (eg, while camping), you can use a power bank.
Visit evapolar.com/en/shop to make a purchase.

CONTROL PANEL & MENU

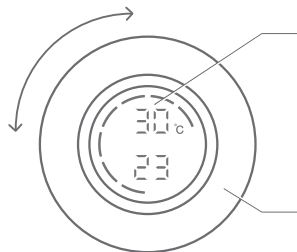
SCREEN ELEMENTS



CONTROL ELEMENTS

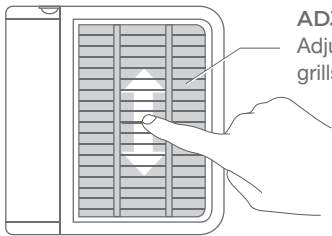
TOUCHABLE SCREEN

Press and hold to turn the device on/off.
Press once to access the menu.
Press again to confirm the selection.



CONTROL WHEEL

Increase/decrease the airflow by rotating the control wheel. While navigating the menu, the temperature readout is not shown.



ADJUSTABLE FRONT GRILL

Adjust the airflow by tilting the front grills up and down.

MENU ITEMS



NIGHT MODE

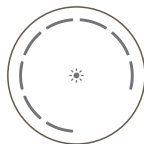
In the night mode, LED-lighting turns off and the display dims.

TIP: Double press the screen to enter night mode quickly. Press once to exit.



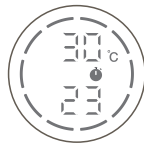
LED LIGHTING COLOR

To choose your preferred color for the water reservoir lighting, rotate the control wheel. Press the screen to confirm your choice.



LED LIGHTING BRIGHTNESS

To choose your preferred brightness level for the water reservoir lighting, rotate the control wheel. Press the screen to confirm your choice. Making it 0% turns off the feature.



SLEEP TIMER

You can set your evaLIGHT plus to turn off the fan after a specific period of time. To select one of the available time periods (from 1 to 180 minutes) rotate the control wheel, press the screen to confirm your choice.



TEMPERATURE MEASUREMENT UNITS

To select Celsius/Fahrenheit, rotate the control wheel, and press the screen to confirm your choice.

FACTORY SETTINGS

To restore the factory settings, disconnect the power cord, press the screen, and reconnect the cord while keeping the screen pressed. Don't let the screen off for 5 seconds after reconnecting.

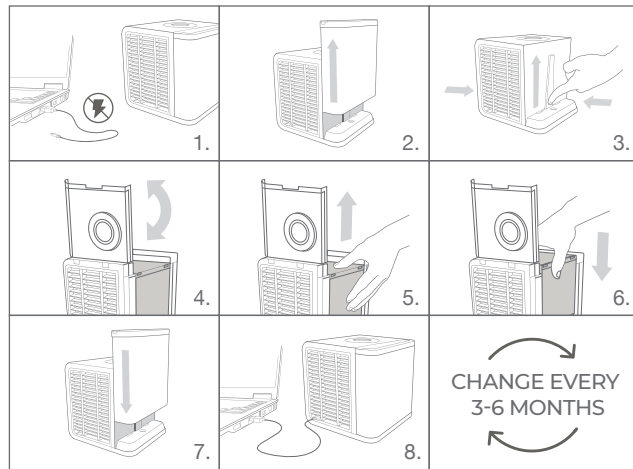
REPLACING THE CARTRIDGE

1. Disconnect the device from the power source.
2. Remove the reservoir by sliding it up.
3. Use both hands to lift the upper part of the body. Push on both sides of its base to release the locks and then slide it upwards.
4. Unlock and move the control unit upward and to the side.
5. Take out the old cartridge by lifting it up.
6. Place a new cartridge in place of the old one.
7. Put the device back together. Make sure the control unit is locked in its place and the housing top fits in the slots.
8. The device is ready to use.

Depending on usage and storage, the cartridge can last up to 3-6 months. Poor water quality reduces the lifespan of the cartridge.

WARNING!

When choosing a new cartridge for your evalIGHT plus, be careful: you need a cartridge forev-1500 model; the cartridge for ev-1000 (evalIGHT, the old model) is incompatible with your device.



MAINTENANCE: CLEANING, STORAGE, TRANSPORTATION

We strongly recommend drying the device totally before cleaning, storage, and long-distance transportation. To do this, you need to empty the water tank and set the device to run on the maximum fan speed for at least 4-5 hours to dry the water out from the internal reservoir section.

CLEANING

The cleaning period depends on the level of dust in the area you use your air cooler in.

The front grill and the internal area can be wiped with a soft cloth.

A cleaning procedure can be carried out, when

- The device is totally dry
- The device is unplugged
- The cartridge is extracted



! Do not wipe the inside of the cartridge, just its outer plastic body.

STORAGE DURING LONG PERIODS OF NO USAGE

If you're not intending to use the device for more than 5 days, we strongly recommend the following:

- Dry the device and clean it (as described above).
- Place the device into an appropriately sized package for storage (original package is recommended). Store the device in a dry space at room temperature.

TRANSPORTATION

Before any kind of transportation, the device should be disconnected from the power source.

Do not transport the device long distances with a wet cartridge; please see "Storage during long periods of no usage" section. For shorter distances, make sure that the device with a wet cartridge is not isolated in a box or bag with no airflow.

TROUBLESHOOTING

PROBLEM: Cold air does not come out of the device despite the fact the cartridge is wet

POSSIBLE CAUSE 1: Humidity level over 70%

SOLUTION: Ventilate the room

POSSIBLE CAUSE 2: The cartridge has expired

SOLUTION: Replace the cartridge

PROBLEM: Cold air does not come out of the device and the cartridge seems to be dry despite the fact the water tank is full

SOLUTION: Since there can be different reasons for that, please, contact our support team

PROBLEM: The airflow strength indicator (dashed ring on the screen) blinks, the airflow rate decreases

POSSIBLE CAUSE: The device does not receive enough power

SOLUTION: Ensure the power source for your evalIGHTplus meets the 2A 5V requirement. Please, contact our support team if that didn't help

PROBLEM: The device suddenly started emitting an unpleasant odor

POSSIBLE CAUSE: Impurities in water or air absorbed by the filter

SOLUTION: Pour a full tank of clean, distilled water and let the device completely dry out (this may take several times to remove the smell completely)

PROBLEM: There is water near the device

POSSIBLE CAUSE: Should be reviewed properly with a support team specialist, please, contact us for assistance via the link below



TECHNICAL SUPPORT

SPECIFICATIONS

Input voltage / current	5 V / 2 A
Power consumption	10 W
Cooling power	100 W - 350 W / 340 - 1190 BTU/hr
Coverage area (in the direction of the airflow)	Up to 3 m ² (32 ft ²)
Volumetric Flow Rate	55.1 cfm
Energy Efficiency Ratio (EER)	21-37
Water tank capacity	1000 ml (33.8 oz)
Water refill cycle	every 3 - 8 hours
Size	182 x 180 x 180 mm / (7.16 x 7.08 x 7.08 inch)
Weight (without water)	1270 g (2,8 lb)
Working conditions	Relative humidity <70% Temperature >18°C (64F)
Working noise level	25-45 dB
Package set	Replaceable cartridge, Power cable (USB micro), Power adapter

EEE WASTE

Please, dispose of the cartridge and the device according to the state law.



LEGAL INFORMATION

The device complies with the requirements of EU Directives – 2014/35/EU Low Voltage Directive and 2014/30/EU EMC Directive, as well as the following European harmonised standards:

- EN 55014-1:2006/ A1:2009/ A2:2011 - Electromagnetic compatibility. Requirements for household appliances, electric tools and similar apparatus Part 1: Emission
- EN 55014-2:2015 - Electromagnetic compatibility. Requirements for household appliances, electric tools and similar apparatus. Part 2: Immunity. Product family standard
- EN 61000-3-2:2014 Electromagnetic compatibility (EMC). Part 3-2: Limits. Limits for harmonic current emissions (equipment input current ≤16 A per phase)
- EN 61000-3-3:2013 Electromagnetic compatibility (EMC). Part 3-3: Limits. Limitation of voltage changes, voltage fluctuations and flicker in public low-voltage supply systems, for equipment

with rated current $\leq 16\text{A}$ per phase and not subject to conditional connection

- EN 60335-1:2012/AC:2014/A11:2014 - Household and similar electrical appliances. Safety. Part 1: General requirements
- EN 60335 -2-40:2003/ A11:2004/ A12:2005/ C1:2006/ A1:2006/ A2:2009/ C2:2010/ A13:2012/ A13/AC:2013 - Household and similar electrical appliances. Safety. Part 2-40: Particular requirements for electrical heat pumps, air-conditioners and dehumidifiers.

The device is marked by the sticker on the bottom of the case and contains the following data: manufacturers name \ product name \ serial number \ year of manufacture \ power settings (voltage, frequency, maximum power consumption, weight) \ CE marking.